

# Sonate 2 da Chiesa

1. Flute

fra Opus 1

A. Corelli

Arr. Arne Dich

## 1. Grave

Musical notation for the first staff of the first movement, measures 1-6. The key signature is one flat (B-flat) and the time signature is 4/4. The melody consists of eighth and quarter notes.

Musical notation for the second staff of the first movement, measures 7-11. Measure 8 is marked with a box containing the number 8 and the label 'Solo A'. Measure 11 is marked with a box containing the word 'Tutti'.

Musical notation for the third staff of the first movement, measures 12-16. Measure 13 is marked with a box containing the number 13 and the label 'Solo B'. Measure 16 is marked with a box containing the word 'Tutti'.

Musical notation for the fourth staff of the first movement, measures 17-21. The staff ends with a double bar line.

Musical notation for the first staff of the second movement, measures 1-3. The key signature is one flat and the time signature is 4/4. The tempo is marked '2. Vivace'.

Musical notation for the second staff of the second movement, measures 4-10. Measure 7 is marked with a box containing the number 7.

Musical notation for the third staff of the second movement, measures 11-17. Measure 16 is marked with a box containing the number 16.

Musical notation for the fourth staff of the second movement, measures 18-23. Measure 22 is marked with a box containing the number 22 and the label 'Solo A'. Trills are indicated with 'tr' above notes in measures 22 and 23.

Musical notation for the fifth staff of the second movement, measures 24-29. Measure 24 has a trill 'tr' above the first note. Measure 28 is marked with a box containing the label 'Solo B'. Measures 27 and 28 have trills 'tr' above notes. Measure 29 is marked with a box containing the word 'Tutti'.

Musical notation for the sixth staff of the second movement, measures 30-34. Measure 30 is marked with a box containing the number 30. The staff ends with a double bar line and a 3/4 time signature.

3. Adagio

8 8

17 17

27 Tutti **4. Allegro**

6 12

14 Solo A 20

21 Tutti

30 Solo A 32 Solo B  
*p* *f*

38 Tutti 43

45

52 52 *mf*

2. Flute

Arr. Arne Dich

# Sonate 2 da Chiesa

A. Corelli

## 1. Grave

fra Opus 1

Musical notation for the first system of the first movement, measures 1-7. The key signature is one flat (B-flat) and the time signature is 4/4. The melody begins with a quarter note G4, followed by eighth notes A4-B4, quarter notes C5-B4, and quarter notes A4-G4.

Musical notation for the second system of the first movement, measures 8-12. Measure 8 is marked with a box containing the number 8. The section is labeled 'Solo A'. Measures 10-11 are marked 'Tutti'. Measure 12 is marked 'Solo B'. The melody continues with eighth notes and quarter notes.

Musical notation for the third system of the first movement, measures 13-17. Measure 13 is marked with a box containing the number 13. The section is marked 'Tutti'. The melody features a mix of eighth and quarter notes.

Musical notation for the fourth system of the first movement, measures 18-17. Measure 18 is marked with the number 18. The section is marked '2. Vivace'. The melody is more rhythmic, featuring eighth notes and quarter notes.

Musical notation for the fifth system of the first movement, measures 5-11. Measure 5 is marked with the number 5. Measure 7 is marked with a box containing the number 7. The melody continues with eighth and quarter notes.

Musical notation for the sixth system of the first movement, measures 12-15. Measure 12 is marked with the number 12. Measure 16 is marked with a box containing the number 16. The melody features a mix of eighth and quarter notes.

Musical notation for the seventh system of the first movement, measures 19-21. Measure 19 is marked with the number 19. Measure 22 is marked with a box containing the number 22. The section is labeled 'Solo A'. Trills (tr) are indicated above measures 20 and 21.

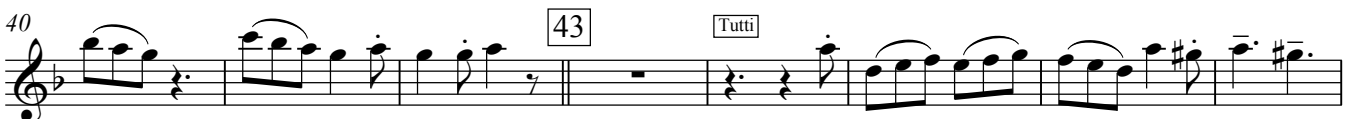
Musical notation for the eighth system of the first movement, measures 26-29. Measure 26 is marked with a box containing the number 26. The section is labeled 'Solo B'. Trills (tr) are indicated above measures 27 and 28. Measure 30 is marked with a box containing the number 30. The section is marked 'Tutti'.

Musical notation for the ninth system of the first movement, measures 31-34. Measure 31 is marked with the number 31. The melody concludes with a final cadence in the key of B-flat major.

3. Adagio



4. Allegro



1. Oboe

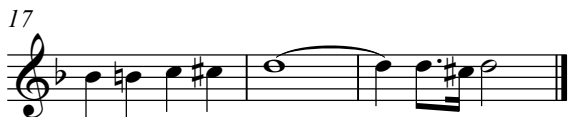
Arr. Arne Dich

# Sonate 2 da Chiesa

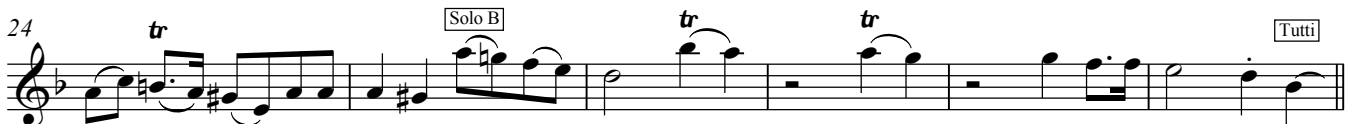
A. Corelli

## 1. Grave

fra Opus 1



## 2. Vivace



3. Adagio

**Tutti** 4. Allegro

2. Oboe

Arr. Arne Dich

# Sonate 2 da Chiesa

A. Corelli

## 1. Grave

fra Opus 1



## 2. Vivace



3. Adagio

Musical notation for measures 1-8 of '3. Adagio'. The key signature has one flat (Bb) and the time signature is 3/4. The notation includes a treble clef, a key signature of one flat, and a time signature of 3/4. The melody starts with a quarter note G4, followed by a quarter note A4, and a quarter note Bb4. It continues with a half note C5, a quarter note D5, and a quarter note E5. The piece concludes with a quarter note F5, a quarter note G5, and a quarter note A5. A box containing the number '8' is placed above the final measure.

Musical notation for measures 9-17 of '3. Adagio'. The notation continues from the previous system. It features a half note G4, a quarter note A4, and a quarter note Bb4. The melody then moves to a half note C5, a quarter note D5, and a quarter note E5. The piece concludes with a quarter note F5, a quarter note G5, and a quarter note A5. A box containing the number '17' is placed above the final measure.

Musical notation for measures 19-28 of '3. Adagio'. The notation continues from the previous system. It features a half note G4, a quarter note A4, and a quarter note Bb4. The melody then moves to a half note C5, a quarter note D5, and a quarter note E5. The piece concludes with a quarter note F5, a quarter note G5, and a quarter note A5. A box containing the number '28' is placed above the final measure.

4. Allegro

Tutti

Musical notation for measures 1-7 of '4. Allegro'. The key signature has one flat (Bb) and the time signature is 6/8. The notation includes a treble clef, a key signature of one flat, and a time signature of 6/8. The melody starts with a quarter rest, followed by a quarter note G4, and a quarter note A4. It continues with a quarter note Bb4, a quarter note C5, and a quarter note D5. The piece concludes with a quarter note E5, a quarter note F5, and a quarter note G5.

Musical notation for measures 8-11 of '4. Allegro'. The notation continues from the previous system. It features a quarter note G4, a quarter note A4, and a quarter note Bb4. The melody then moves to a quarter note C5, a quarter note D5, and a quarter note E5. The piece concludes with a quarter note F5, a quarter note G5, and a quarter note A5. A box containing the number '12' is placed above the final measure.

Musical notation for measures 15-19 of '4. Allegro'. The notation continues from the previous system. It features a quarter note G4, a quarter note A4, and a quarter note Bb4. The melody then moves to a quarter note C5, a quarter note D5, and a quarter note E5. The piece concludes with a quarter note F5, a quarter note G5, and a quarter note A5. A box containing the number '20' is placed above the final measure.

Solo A

Musical notation for measures 23-29 of '4. Allegro'. The notation continues from the previous system. It features a quarter note G4, a quarter note A4, and a quarter note Bb4. The melody then moves to a quarter note C5, a quarter note D5, and a quarter note E5. The piece concludes with a quarter note F5, a quarter note G5, and a quarter note A5. A box containing the number '30' is placed above the final measure.

Tutti

Musical notation for measures 30-37 of '4. Allegro'. The notation continues from the previous system. It features a quarter note G4, a quarter note A4, and a quarter note Bb4. The melody then moves to a quarter note C5, a quarter note D5, and a quarter note E5. The piece concludes with a quarter note F5, a quarter note G5, and a quarter note A5. A box containing the number '32' is placed above the final measure.

Solo A

Solo B

*p*

*f*

Musical notation for measures 38-42 of '4. Allegro'. The notation continues from the previous system. It features a quarter note G4, a quarter note A4, and a quarter note Bb4. The melody then moves to a quarter note C5, a quarter note D5, and a quarter note E5. The piece concludes with a quarter note F5, a quarter note G5, and a quarter note A5. A box containing the number '43' is placed above the final measure.

Tutti

Musical notation for measures 46-51 of '4. Allegro'. The notation continues from the previous system. It features a quarter note G4, a quarter note A4, and a quarter note Bb4. The melody then moves to a quarter note C5, a quarter note D5, and a quarter note E5. The piece concludes with a quarter note F5, a quarter note G5, and a quarter note A5. A box containing the number '52' is placed above the final measure.

Musical notation for measures 53-57 of '4. Allegro'. The notation continues from the previous system. It features a quarter note G4, a quarter note A4, and a quarter note Bb4. The melody then moves to a quarter note C5, a quarter note D5, and a quarter note E5. The piece concludes with a quarter note F5, a quarter note G5, and a quarter note A5. A box containing the number '57' is placed above the final measure.

*mf*



Clarinet in E $\flat$

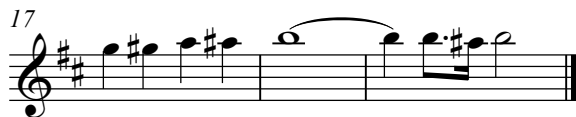
Arr. Arne Dich

# Sonate 2 da Chiesa

A. Corelli

## 1. Grave

fra Opus 1



## 2. Vivace



3. Adagio

Clarinet in E $\flat$

Corelli

4. Allegro

Tutti

1. Clarinet in B $\flat$

Arr. Arne Dich

# Sonate 2 da Chiesa

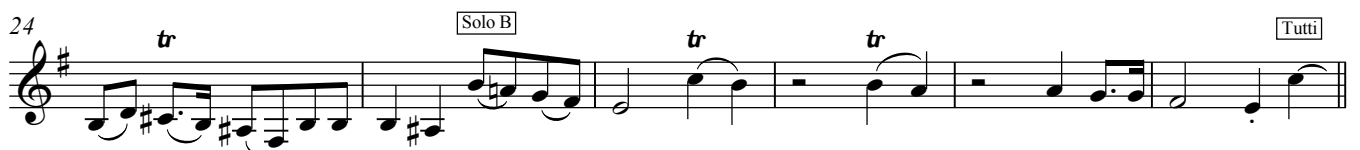
A. Corelli

## 1. Grave

fra Opus 1



## 2. Vivace



3. Adagio

Musical notation for measures 1-8 of '3. Adagio'. The key signature is one sharp (F#) and the time signature is 3/4. The notation includes a treble clef, a key signature of one sharp, and a time signature of 3/4. The music features a series of eighth and quarter notes with some slurs and accents. A box containing the number '8' is placed above the final measure of this section.

Musical notation for measures 9-16 of '3. Adagio'. The notation continues with eighth and quarter notes, maintaining the same key signature and time signature. A box containing the number '9' is placed above the first measure of this section.

Musical notation for measures 17-25 of '3. Adagio'. The notation continues with eighth and quarter notes. A box containing the number '17' is placed above the first measure of this section.

4. Allegro

Musical notation for measures 26-25 of '4. Allegro'. The key signature changes to two sharps (F# and C#) and the time signature changes to 6/8. The notation includes a treble clef, a key signature of two sharps, and a time signature of 6/8. A box containing the number '26' is placed above the first measure, and a box containing the word 'Tutti' is placed above the second measure.

Musical notation for measures 26-33 of '4. Allegro'. The notation continues with eighth and quarter notes in 6/8 time. A box containing the number '5' is placed above the first measure.

Musical notation for measures 34-41 of '4. Allegro'. The notation continues with eighth and quarter notes. A box containing the number '12' is placed above the first measure.

Musical notation for measures 42-49 of '4. Allegro'. The notation continues with eighth and quarter notes. A box containing the text 'Solo A' and the number '20' is placed above the first measure.

Musical notation for measures 50-57 of '4. Allegro'. The notation continues with eighth and quarter notes. A box containing the text 'Tutti' is placed above the first measure, a box containing the text 'Solo A' is placed above the second measure, a box containing the number '32' is placed above the third measure, and a box containing the text 'Solo B' is placed above the fourth measure. Dynamic markings 'p' and 'f' are placed below the notes.

Musical notation for measures 58-65 of '4. Allegro'. The notation continues with eighth and quarter notes.

Musical notation for measures 66-73 of '4. Allegro'. The notation continues with eighth and quarter notes. A box containing the text 'Tutti' and the number '43' is placed above the first measure.

Musical notation for measures 74-81 of '4. Allegro'. The notation continues with eighth and quarter notes. A box containing the number '52' is placed above the first measure.

Musical notation for measures 82-89 of '4. Allegro'. The notation continues with eighth and quarter notes. A box containing the number '53' is placed above the first measure. The piece concludes with a dynamic marking 'mf' below the final notes.

2. Clarinet in B $\flat$

Arr. Arne Dich

# Sonate 2 da Chiesa

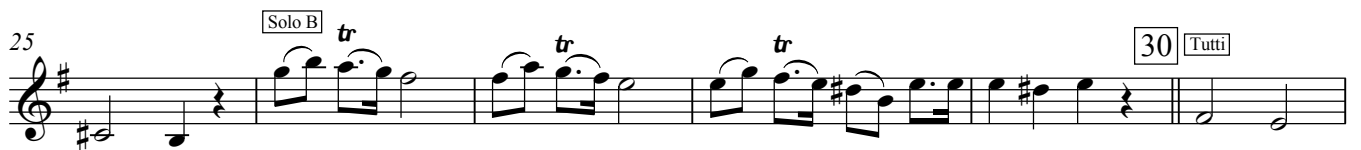
A. Corelli

fra Opus 1

## 1. Grave



## 2. Vivace



3. Adagio

Musical notation for measures 1-8 of '3. Adagio'. The key signature has one sharp (F#) and the time signature is 3/4. The melody consists of quarter and eighth notes with some slurs and accents.

Musical notation for measures 9-16 of '3. Adagio'. The melody continues with quarter and eighth notes, including slurs and accents.

Musical notation for measures 17-25 of '3. Adagio'. The melody continues with quarter and eighth notes, including slurs and accents.

4. Allegro

Musical notation for measures 26-25 of '4. Allegro'. The key signature has one sharp (F#) and the time signature is 6/8. Measure 26 ends with a double bar line. Measure 25 begins with a 'Tutti' marking.

Musical notation for measures 4-10 of '4. Allegro'. The melody features eighth and sixteenth notes with slurs.

Musical notation for measures 11-19 of '4. Allegro'. The melody continues with eighth and sixteenth notes, including slurs and accents.

Musical notation for measures 18-24 of '4. Allegro'. Measure 18 has a 'Solo A' marking. Measure 20 has a measure rest. Measure 24 has a 'Tutti' marking.

Musical notation for measures 25-31 of '4. Allegro'. Measure 25 has a 'Tutti' marking. Measure 31 has a 'Solo A' marking and a piano (*p*) dynamic marking.

Musical notation for measures 32-38 of '4. Allegro'. Measure 32 has a 'Solo B' marking and a forte (*f*) dynamic marking.

Musical notation for measures 39-45 of '4. Allegro'. Measure 43 has a 'Tutti' marking.

Musical notation for measures 46-52 of '4. Allegro'. Measure 52 has a measure rest.

Musical notation for measures 53-59 of '4. Allegro'. Measure 59 has a mezzo-forte (*mf*) dynamic marking.

3. Clarinet in B $\flat$

Arr. Arne Dich

# Sonate 2 da Chiesa

A. Corelli

fra Opus 1

## 1. Grave

Musical notation for the first staff of the first movement, Grave. The key signature is one sharp (F#) and the time signature is 4/4. The staff contains a series of eighth and quarter notes, starting with a half note followed by a quarter note, then a pair of eighth notes, and so on.

Musical notation for the second staff of the first movement, Grave. It begins with a measure rest marked with the number 8. The staff contains a series of eighth and quarter notes. Above the staff, there are markings for "Solo A" and "Tutti". The staff ends with a measure rest marked with the number 13.

Musical notation for the third staff of the first movement, Grave. It begins with a measure rest marked with the number 14. The staff contains a series of eighth and quarter notes. Above the staff, there is a marking for "Tutti". The staff ends with a double bar line and a 4/4 time signature.

## 2. Vivace

Musical notation for the first staff of the second movement, Vivace. The key signature is one sharp (F#) and the time signature is 4/4. The staff contains a series of eighth and quarter notes. Above the staff, there is a marking for "7".

Musical notation for the second staff of the second movement, Vivace. It begins with a measure rest marked with the number 8. The staff contains a series of eighth and quarter notes.

Musical notation for the third staff of the second movement, Vivace. It begins with a measure rest marked with the number 14. The staff contains a series of eighth and quarter notes. Above the staff, there is a marking for "16".

Musical notation for the fourth staff of the second movement, Vivace. It begins with a measure rest marked with the number 19. The staff contains a series of eighth and quarter notes. Above the staff, there are markings for "Solo A" and "22".

Musical notation for the fifth staff of the second movement, Vivace. It begins with a measure rest marked with the number 25. The staff contains a series of eighth and quarter notes. Above the staff, there are markings for "Solo B" and "30 Tutti".

Musical notation for the sixth staff of the second movement, Vivace. It begins with a measure rest marked with the number 31. The staff contains a series of eighth and quarter notes. The staff ends with a double bar line and a 3/4 time signature.

3. Adagio

Musical score for the Adagio section, measures 1 through 19. The key signature is one sharp (F#) and the time signature is 3/4. The music features a melodic line with various ornaments and dynamics. Measure numbers 8, 17, and 19 are indicated in boxes. A double bar line with a repeat sign is at the end of measure 19.

4. Allegro

Musical score for the Allegro section, measures 1 through 52. The key signature is one sharp (F#) and the time signature is 6/8. The music is more rhythmic and includes various performance markings such as *Tutti*, *Solo A*, *Solo B*, *f*, and *mf*. Measure numbers 4, 12, 20, 23, 32, 40, 43, 46, and 52 are indicated in boxes. A double bar line with a repeat sign is at the end of measure 52.



Alto Clarinet in E $\flat$

Arr. Arne Dich

# Sonate 2 da Chiesa

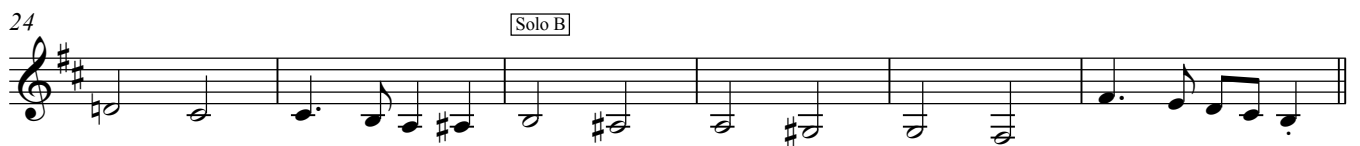
A. Corelli

## 1. Grave

fra Opus 1



## 2. Vivace



3. Adagio

Musical score for '3. Adagio' in G major, 3/4 time. The score consists of three staves of music. The first staff starts at measure 1 and ends at measure 8, with a box containing the number 8. The second staff starts at measure 10 and ends at measure 17, with a box containing the number 17. The third staff starts at measure 20 and ends at measure 28, with a box containing the number 6. The music features a slow, melodic line with various note values and rests.

4. Allegro

Musical score for '4. Allegro' in G major, 6/8 time. The score consists of ten staves of music. The first staff starts at measure 1 and ends at measure 4, with a box containing the number 4 and the word 'Tutti'. The second staff starts at measure 10 and ends at measure 12, with a box containing the number 12. The third staff starts at measure 16 and ends at measure 20, with a box containing the number 20 and the word 'Solo A'. The fourth staff starts at measure 23 and ends at measure 31, with a box containing the number 31, the word 'Tutti', and the word 'Solo A'. The fifth staff starts at measure 31 and ends at measure 40, with a box containing the number 32, the word 'Solo B', and the dynamic marking *f*. The sixth staff starts at measure 40 and ends at measure 43, with a box containing the number 43 and the word 'Tutti'. The seventh staff starts at measure 46 and ends at measure 52, with a box containing the number 52. The eighth staff starts at measure 52 and ends at measure 59, with a box containing the number 2 and the dynamic marking *mf*. The music features a faster tempo with more rhythmic activity and dynamic markings.

Bass Clarinet in B♭

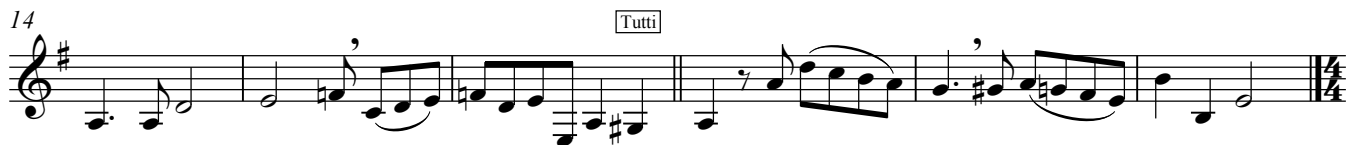
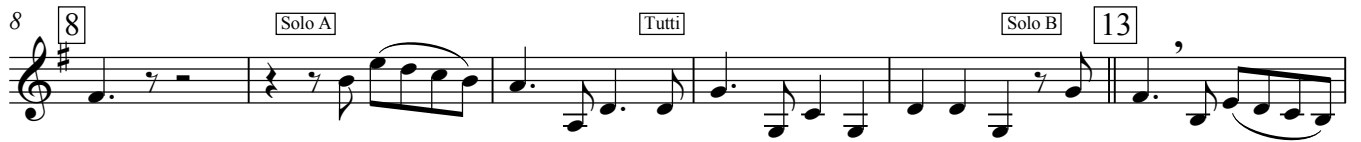
Arr. Arne Dich

# Sonate 2 da Chiesa

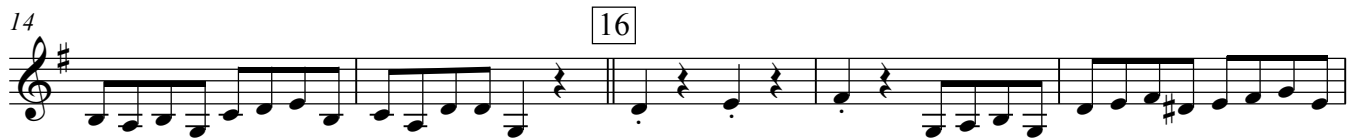
A. Corelli

fra Opus 1

## 1. Grave



## 2. Vivace



3. Adagio

Musical staff for measures 1-8 of '3. Adagio'. The key signature is one sharp (F#) and the time signature is 3/4. The melody consists of quarter and eighth notes with some slurs. A measure rest of 8 measures is indicated at the end of the first line.

Musical staff for measures 9-17 of '3. Adagio'. The melody continues with quarter and eighth notes. A measure rest of 17 measures is indicated at the end of the second line.

Musical staff for measures 18-28 of '3. Adagio'. The melody continues with quarter and eighth notes. A measure rest of 6 measures is indicated at the end of the third line.

4. Allegro

Musical staff for measures 1-4 of '4. Allegro'. The key signature is one sharp (F#) and the time signature is 6/8. It begins with a 'Tutti' marking and a 4-measure rest.

Musical staff for measures 5-12 of '4. Allegro'. The melody features eighth and sixteenth notes. A measure rest of 12 measures is indicated at the end of the second line.

Musical staff for measures 13-20 of '4. Allegro'. The melody continues with eighth and sixteenth notes. A measure rest of 20 measures is indicated at the end of the third line, with a 'Solo A' marking.

Musical staff for measures 21-23 of '4. Allegro'. The melody continues with eighth and sixteenth notes. A measure rest of 23 measures is indicated at the end of the fourth line, with 'Tutti' and 'Solo A' markings. The dynamic marking *p* is present.

Musical staff for measures 24-32 of '4. Allegro'. The melody continues with eighth and sixteenth notes. A measure rest of 32 measures is indicated at the end of the fifth line, with 'Solo B' and *f* markings.

Musical staff for measures 33-43 of '4. Allegro'. The melody continues with eighth and sixteenth notes. A measure rest of 43 measures is indicated at the end of the sixth line, with 'Tutti' markings.

Musical staff for measures 44-46 of '4. Allegro'. The melody continues with eighth and sixteenth notes.

Musical staff for measures 47-52 of '4. Allegro'. The melody continues with eighth and sixteenth notes. A measure rest of 52 measures is indicated at the end of the seventh line. The dynamic marking *mf* is present.

Contra Alto Clarinet in E $\flat$

Arr. Arne Dich

# Sonate 2 da Chiesa

A. Corelli

## 1. Grave

fra Opus 1



3. Adagio

Musical notation for measures 1-8 of '3. Adagio'. The key signature is one sharp (F#) and the time signature is 3/4. The melody consists of quarter and half notes with some slurs and accents.

Musical notation for measures 9-17 of '3. Adagio'. The melody continues with quarter and half notes, including slurs and accents.

Musical notation for measures 18-25 of '3. Adagio'. The melody continues with quarter and half notes, including slurs and accents.

4. Allegro

Musical notation for measures 26-32 of '4. Allegro'. Measure 26 is a whole rest. Measures 27-32 are in 6/8 time, starting with a 'Tutti' marking and a 4-measure rest.

Musical notation for measures 33-41 of '4. Allegro'. The melody is in 6/8 time, featuring eighth and sixteenth notes with slurs.

Musical notation for measures 42-50 of '4. Allegro'. The melody continues in 6/8 time with eighth and sixteenth notes. A 'Solo A' marking appears at measure 49.

Musical notation for measures 51-59 of '4. Allegro'. The melody continues in 6/8 time with eighth and sixteenth notes. A 'Tutti' marking appears at measure 58.

Musical notation for measures 60-68 of '4. Allegro'. The melody continues in 6/8 time. A 'Solo A' marking is at measure 60, a 'Solo B' marking is at measure 64, and a 2-measure rest is at measure 65.

Musical notation for measures 69-77 of '4. Allegro'. The melody continues in 6/8 time with eighth and sixteenth notes. A 'Tutti' marking is at measure 72 and a 43-measure rest is at measure 73.

Musical notation for measures 78-86 of '4. Allegro'. The melody continues in 6/8 time with eighth and sixteenth notes.

Musical notation for measures 87-95 of '4. Allegro'. The melody continues in 6/8 time with eighth and sixteenth notes. A 52-measure rest is at measure 88, and a 2-measure rest is at measure 90. The piece ends with a 'mf' dynamic marking.

Bassoon

Arr. Arne Dich

# Sonate 2 da Chiesa

A. Corelli

## 1. Grave

fra Opus 1

First staff of music, measures 1-7. Bass clef, 4/4 time signature. The melody begins with a half note G2, followed by quarter notes A2, B2, and C3. A whole rest follows, then a half note D3, quarter notes E3, F3, and G3.

Second staff of music, measures 8-12. Measure 8 is marked with a box containing the number 8. Measure 9 is marked with a box containing 'Solo A'. Measure 10 is marked with a box containing 'Tutti'. Measure 11 is marked with a box containing 'Solo B'. Measure 12 is marked with a box containing 'Tutti'. The melody continues with quarter notes G3, F3, E3, and D3.

Third staff of music, measures 13-17. Measure 13 is marked with a box containing the number 13. Measure 14 is marked with a box containing 'Tutti'. The melody continues with quarter notes C3, B2, A2, and G2.

Fourth staff of music, measures 18-19. Measure 18 is marked with the number 18. The melody continues with quarter notes F2, E2, and D2.

## 2. Vivace

Fifth staff of music, measures 1-4. Measure 1 is marked with the number 5. Measure 2 is marked with a box containing the number 7. The melody begins with a half note G2, followed by quarter notes A2, B2, and C3.

Sixth staff of music, measures 5-11. Measure 5 is marked with the number 12. Measure 11 is marked with a box containing the number 16. The melody continues with quarter notes D3, E3, F3, and G3.

Seventh staff of music, measures 12-16. Measure 12 is marked with the number 17. Measure 16 is marked with a box containing 'Solo A'. The melody continues with quarter notes A3, B3, and C4.

Eighth staff of music, measures 17-21. Measure 17 is marked with the number 22. Measure 21 is marked with a box containing 'Solo B'. The melody continues with quarter notes D4, E4, and F4.

Ninth staff of music, measures 22-30. Measure 22 is marked with a box containing the number 30. Measure 23 is marked with a box containing 'Tutti'. The melody continues with quarter notes G4, F4, E4, and D4. The piece ends with a double bar line and a 3/4 time signature.

3. Adagio

8

10

17

18

4. Allegro

26

Tutti

4

8

12

16

20 Solo A

23

Tutti

Solo A

p

31

32

2

Solo B

f

39

Tutti

43

46

52

2

mf